

Schnellmontagekran

Fast self erecting tower crane

Grue à montage rapide





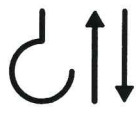






TK 2510/3

DIN 15018 H1 B3



TK 2510/3

Leistungsdaten Performance data Details techniques	Ausladung (m) Radius Portée	Tragkraft (kg) Lifting capacity Capacité	Max. Tragkraft (kg) Lifting capacity max. Capacité max.
Ausleger 25 m Jib 25 m / Flèche 25 m	25	1000	3000

Geschwindigkeiten Speeds Vitesses	Heben Lifting Levage					
			m/min.	kg	m/min.	kg
			45	1500	-	-
			22	3000	-	-
			5	3000	-	-
	Katzfahren Trolleying / Distribution			m/min.	20/40	
	Drehen stufenlos Slewing / Orientation			r.p.m.	0,1 ↔ 0,9	

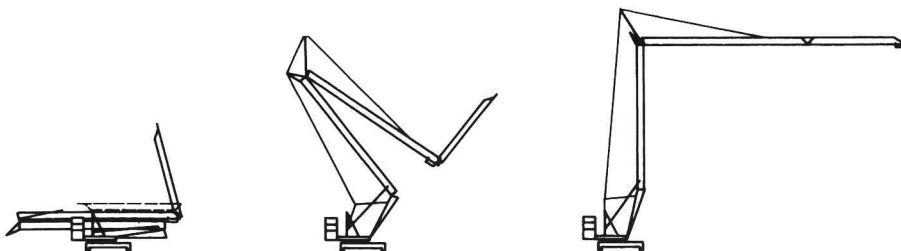
Allgemeine technische Daten

General technical data
Details techniques généraux

Konstruktionsgewicht Weight / Poids de la grue	kg	8.000	Ges. elektr. Leistung Motor power / Puissance total	kW	17
Gegengewicht Counterweight / Contrepoids	kg	12.500	Kabelquerschnitt Cable section / Section du câble	mm ²	5 x 10
Drehradius Slewing radius / Rayon de giration	m	2,5	Netzstrom Mains supply / Réseau	V/Hz	400/50
Max. Eckdruck Corner load / Pression	kN	115			
Spindelabstand Support basis / Ecartement	m	3,8x3,8			

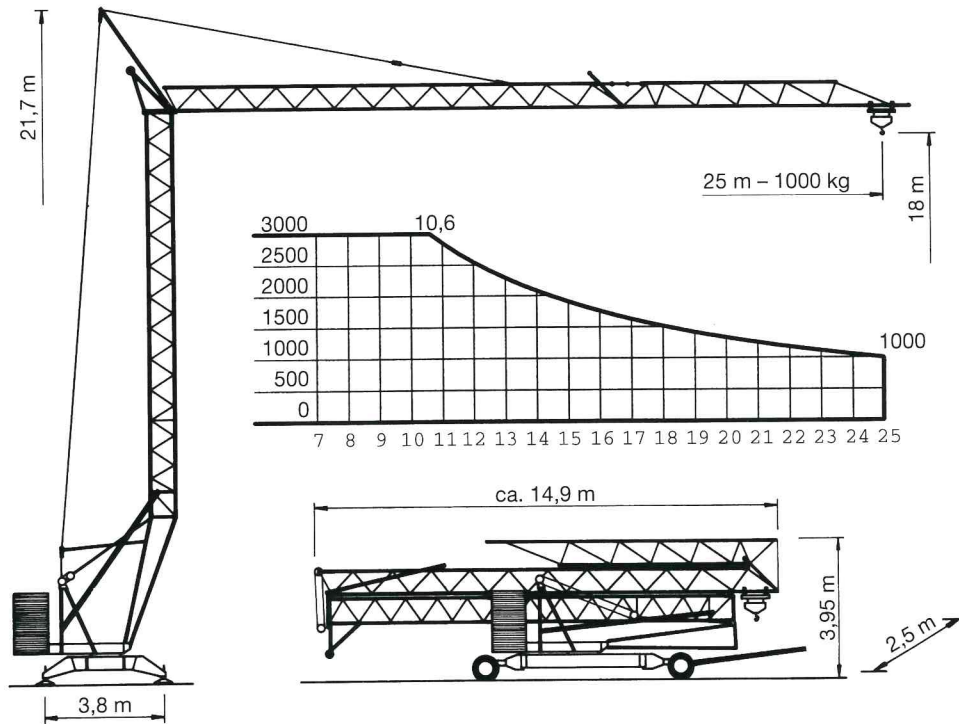
Montage

Erection
Montage



TK 2510/3

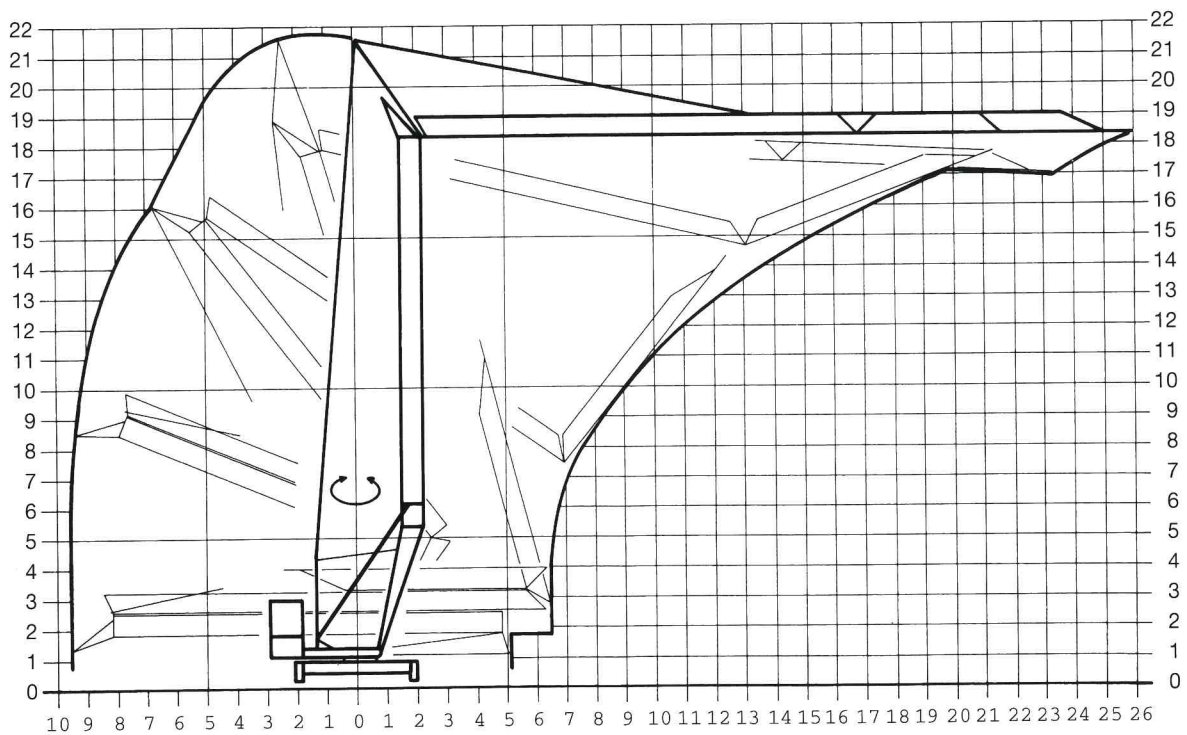
BGL 2102 - 0025
25 m - 1000 kg
max. - 3000 kg



Montage - Platzbedarfsdiagramm

Erection - Space required diagram

Montage - Surface utile





Besondere Merkmale

- Mit 6,7 Tonnen Teilballast verfahrbar
- Montage über Einseiltechnik in 4 Minuten
- Auslegerluftmontage
- Automatische Abspindelvorrichtung
- Automatische Katzseilnachspannung
- Alle Antriebe frequenzgeregelt (stufenlos) oder polumschaltbar
- Turm und Ausleger feuerverzinkt

Technische Änderungen vorbehalten

Special Features

- Movable with partial ballast of 6,7 tons
- Erection by single rope technique within 4 minutes
- Jib assembly above ground
- Automatic support device
- Automatic trolley cable rope tension device
- All drives frequency-controlled or pole-changing
- Hot galvanized tower and jib

Subject to change without notice

Caractéristiques particulières

- Transportable avec lest partiel de 6,7 tonnes
- Montage par technique monocâble en 4 minutes
- Montage de la flèche en l'air
- Mise en place automatique des sabots
- Tendeur automatique de chariotage
- Tous les entraînements a fréquence contrôlée ou a changement de pole
- Tour et flèche galvanisés à chaud

Sous réserve de modification

KSD Kransysteme GmbH

Schillerstraße 30 - 38
 D-66482 Zweibrücken
 Telefon: (0 63 32) 92 18 - 0
 Telefax: (0 63 32) 92 18 - 40
 e-Mail: ksd@ksd-kransysteme.de
 Internet: www.ksd-kransysteme.de

Überreicht durch / Presented by / *Présenté par:*

